

Courtesy Of Fan Yang and Vida Guan Of Mozaic Realty Group

# \$229,000 - 213 1316 Windermere Way, Edmonton

MLS® #E4420658

**\$229,000**

1 Bedroom, 1.00 Bathroom, 520 sqft  
Condo / Townhouse on 0.00 Acres

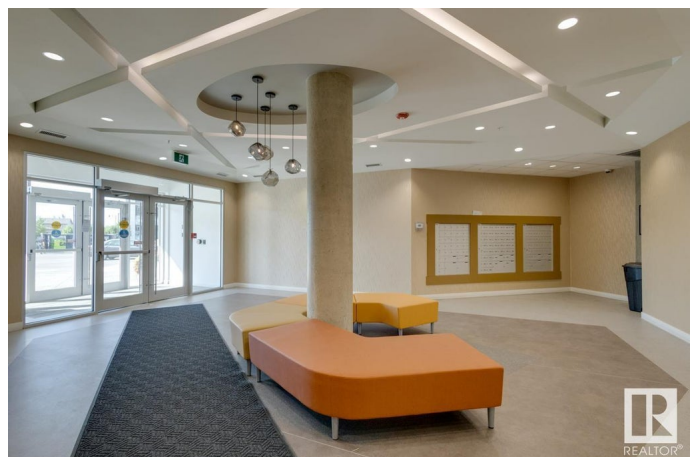
Windermere, Edmonton, AB

Welcome to LUX, a brand new STEEL & CONCRETE luxury building in Upper Windermere offers all amenities. Condo allows pet and Airbnb. Stunning POND & PARK view - Providing a serene and peaceful environment to relax and unwind. Titled U/G Parking. In suite Laundry. Decorated with only the best of everything. Highlights: 10'™ ceilings; energy efficient windows; Upgraded plank floor & carpet through out the unit; Kitchen-Complete stainless gourmet appliances; maple cabinets up to ceilings; Contemporary, quartz countertops; Glass tile backsplash; lots of storage space. Full width vanity mirrors. One Secured underground parking (Heated and ventilated). It retains the value of peaceful living with great access to all amenities and transportation, community gardens, a K-9 school and while being conveniently close to all amenities.

Built in 2019

## Essential Information

|                |           |
|----------------|-----------|
| MLS® #         | E4420658  |
| Price          | \$229,000 |
| Bedrooms       | 1         |
| Bathrooms      | 1.00      |
| Full Baths     | 1         |
| Square Footage | 520       |
| Acres          | 0.00      |



|            |                        |
|------------|------------------------|
| Year Built | 2019                   |
| Type       | Condo / Townhouse      |
| Sub-Type   | Lowrise Apartment      |
| Style      | Single Level Apartment |
| Status     | Active                 |

### **Community Information**

|             |                         |
|-------------|-------------------------|
| Address     | 213 1316 Windermere Way |
| Area        | Edmonton                |
| Subdivision | Windermere              |
| City        | Edmonton                |
| County      | ALBERTA                 |
| Province    | AB                      |
| Postal Code | T6W 2J3                 |

### **Amenities**

|                |  |
|----------------|--|
| Amenities      | Air Conditioner, Ceiling 9 ft., Secured Parking, Security Door |
| Parking Spaces | 1  |
| Parking        | Underground  |

### **Interior**

|              |  |
|--------------|--|
| Appliances   | Air Conditioning-Central, Dishwasher-Built-In, Dryer, Garage Control, Microwave Hood Fan, Refrigerator, Stove-Electric, Washer |
| Heating      | Heat Pump, Natural Gas   |
| # of Stories | 5  |
| Stories      | 1  |
| Has Basement | Yes  |
| Basement     | None, No Basement  |

### **Exterior**

|                   |  |
|-------------------|--|
| Exterior          | Concrete, Metal, Stone, Stucco   |
| Exterior Features | Airport Nearby, Golf Nearby, Picnic Area, Playground Nearby, Public Transportation, Schools, Shopping Nearby |
| Roof              | Asphalt Shingles   |
| Construction      | Concrete, Metal, Stone, Stucco   |
| Foundation        | Concrete Perimeter   |

### **School Information**

|            |                          |
|------------|--------------------------|
| Elementary | CONSTABLE DANIEL WOODALL |
|------------|--------------------------|

Middle RIVERBEND SCHOOL  
High LILLIAN OSBORNE SCHOOL

### **Additional Information**

Date Listed February 6th, 2025  
Days on Market 36  
Zoning Zone 56  
Condo Fee \$226

DATA IS DEEMED RELIABLE BUT IS NOT GUARANTEED ACCURATE BY THE REALTORS® ASSOCIATION OF EDMONTON. COPYRIGHT 2025 BY THE REALTORS® ASSOCIATION OF EDMONTON. ALL RIGHTS RESERVED. Trademarks are owned or controlled by the Canadian Real Estate Association (CREA) and identify real estate professionals who are members of CREA (REALTOR®, REALTORS®) and/or the quality of services they provide (MLS®, Multiple Listing Service®)

Listing information last updated on March 13th, 2025 at 10:47pm MDT