

\$224,800 - 11338 86 Street, Edmonton

MLS® #E4421283

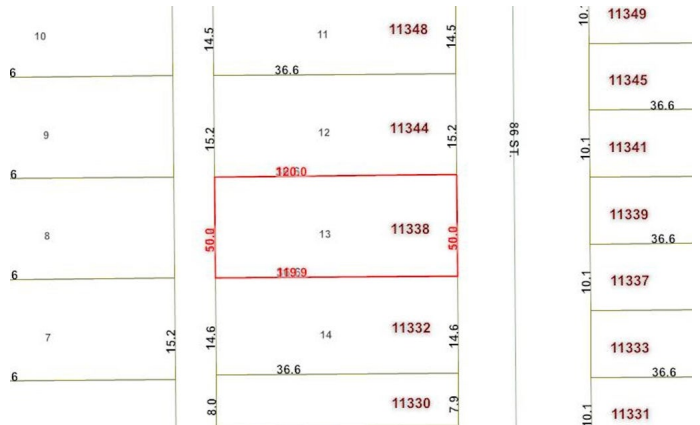
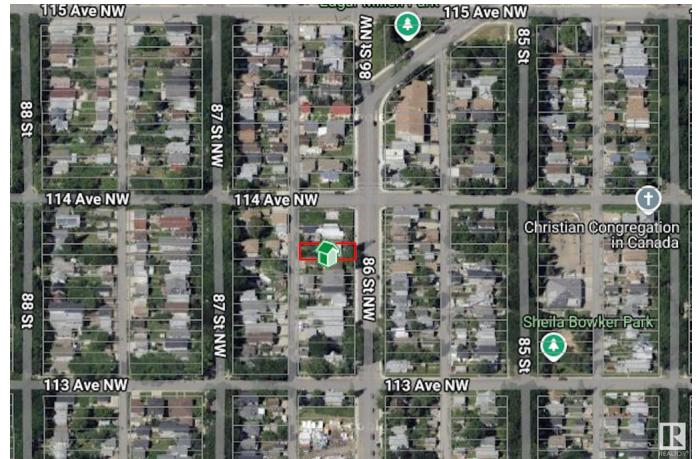
\$224,800

0 Bedroom, 0.00 Bathroom,
Single Family on 0.00 Acres

Parkdale (Edmonton), Edmonton, AB

Welcome to Parkdale! This 50x120 lot offers unlimited potential for development in a prime location, ideal for those looking to build their dream home or an investment property.

Situated in a highly sought-after neighbourhood, it's just a stone's throw away from all essential amenities, including schools, shopping centers, restaurants, and public transportation, making it the perfect spot for both convenience and lifestyle. The lot is generously sized, providing ample space for any project, whether you're envisioning a spacious family home or a multi-unit development. With RF3 ZONING this lot is ready for a SIDE BY SIDE DUPLEX, MULTI-FAMILY RESIDENTIAL DEVELOPMENT, SKINNY HOMES, the possibilities are endless! With its excellent location, this property is an outstanding opportunity for anyone looking to invest in a vibrant community or create a custom-built haven in a rapidly growing area.



Essential Information

MLS® #	E4421283
Price	\$224,800
Bathrooms	0.00
Acres	0.00
Type	Single Family

Sub-Type Vacant Lot/Land
Status Active

Community Information

Address 11338 86 Street
Area Edmonton
Subdivision Parkdale (Edmonton)
City Edmonton
County ALBERTA
Province AB
Postal Code T5B 3J1

Exterior

Exterior Features Playground Nearby, Public Transportation, Schools, Shopping Nearby

School Information

Elementary Delton School
Middle Spruce Avenue School
High Victoria School

Additional Information

Date Listed February 12th, 2025
Days on Market 28
Zoning Zone 05

DATA IS DEEMED RELIABLE BUT IS NOT GUARANTEED ACCURATE BY THE REALTORS® ASSOCIATION OF EDMONTON. COPYRIGHT 2025 BY THE REALTORS® ASSOCIATION OF EDMONTON. ALL RIGHTS RESERVED. Trademarks are owned or controlled by the Canadian Real Estate Association (CREA) and identify real estate professionals who are members of CREA (REALTOR®, REALTORS®) and/or the quality of services they provide (MLS®, Multiple Listing Service®)

Listing information last updated on March 12th, 2025 at 3:17pm MDT