

\$777,000 - 8307 Saskatchewan Drive, Edmonton

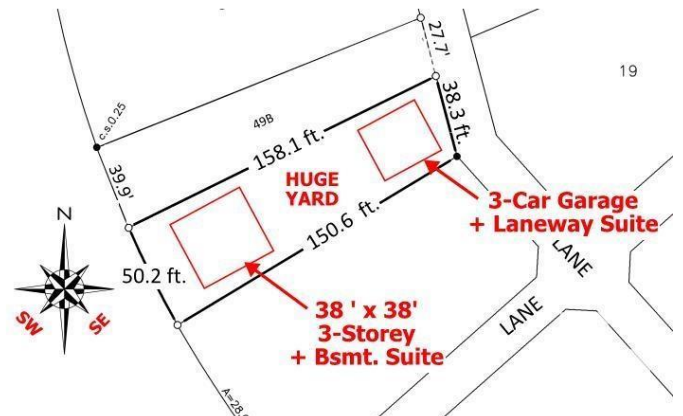
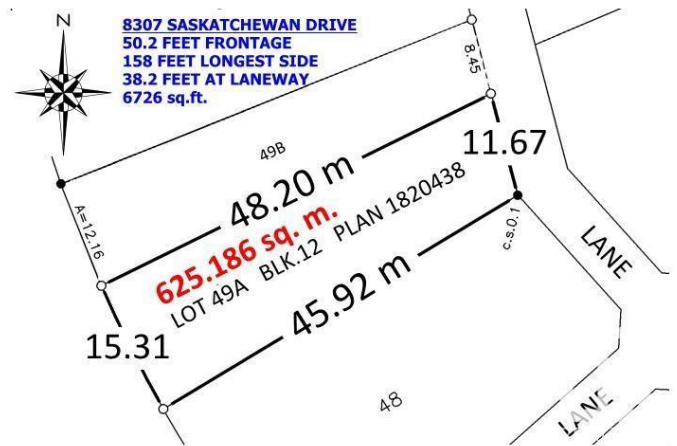
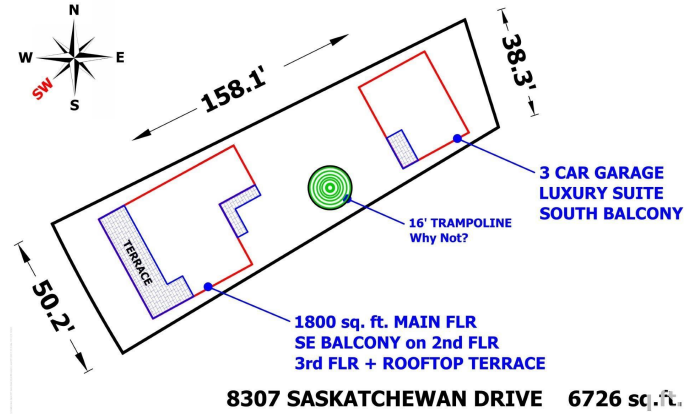
MLS® #E4425274

\$777,000

0 Bedroom, 0.00 Bathroom,
Single Family on 0.00 Acres

Windsor Park (Edmonton), Edmonton, AB

Please price-compare: 625 sq.m., 6726 sq.ft., 50-foot front, 38-foot lane way access. Build a 38 ft. wide 3-storey home and a triple garage. Best Southwest sunset view on Saskatchewan Drive. Because you are directly across from "Irene's Lookout" you see the whole River Valley from your new second and third floors. Serviced lot is cleared and flat - no demolition required. Motivated seller.



Essential Information

MLS® #	E4425274
Price	\$777,000
Bathrooms	0.00
Acres	0.00
Type	Single Family
Sub-Type	Vacant Lot/Land
Status	Active

Community Information

Address	8307 Saskatchewan Drive
Area	Edmonton
Subdivision	Windsor Park (Edmonton)
City	Edmonton
County	ALBERTA
Province	AB
Postal Code	T6G 2A7

Exterior

Exterior Features Flat Site, Level Land, Ravine View, River Valley View, River View, Subdividable Lot, Treed Lot, See Remarks

Additional Information

Date Listed March 12th, 2025

Days on Market 2

Zoning Zone 15

DATA IS DEEMED RELIABLE BUT IS NOT GUARANTEED ACCURATE BY THE REALTORS® ASSOCIATION OF EDMONTON. COPYRIGHT 2025 BY THE REALTORS® ASSOCIATION OF EDMONTON. ALL RIGHTS RESERVED. Trademarks are owned or controlled by the Canadian Real Estate Association (CREA) and identify real estate professionals who are members of CREA (REALTOR®, REALTORS®) and/or the quality of services they provide (MLS®, Multiple Listing Service®)

Listing information last updated on March 14th, 2025 at 6:02am MDT