

# \$180,000 - 1 9325 104 Avenue, Edmonton

MLS® #E4443559

**\$180,000**

3 Bedroom, 2.00 Bathroom, 1,493 sqft

Condo / Townhouse on 0.00 Acres

Boyle Street, Edmonton, AB

Unbeatable value in this beautifully upgraded 3-bedroom plus den, 2-bath condo offering a generous living space—just minutes from downtown and the Ice District! With expansive windows that flood the home with natural light, this property is ideal as a stylish starter home or a high-performing investment. The kitchen features sleek, custom glossy white cabinetry, striking one-and-a-quarter-inch quartz countertops, stainless steel appliances, and a designer tile backsplash. Luxury vinyl plank flooring and stunning tile run throughout the home, creating a modern and cohesive look. The spacious primary suite includes an ensuite with a chic stand-up shower, while the main bathroom boasts a large double-sink vanity—perfect for shared living. The oversized living and dining areas offer flexibility to suit any lifestyle, and the large in-suite laundry room provides plenty of extra storage. The building stands out with excellent curb appeal and a covered parking stall for year-round convenience.

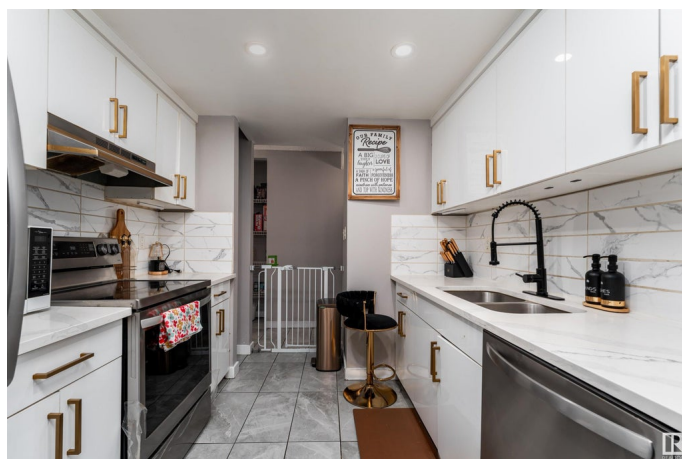
Built in 1977

## Essential Information

MLS® # E4443559

Price \$180,000

Bedrooms 3



Bathrooms	2.00
Full Baths	2
Square Footage	1,493
Acres	0.00
Year Built	1977
Type	Condo / Townhouse
Sub-Type	Lowrise Apartment
Style	Single Level Apartment
Status	Active

### Community Information

Address	1 9325 104 Avenue
Area	Edmonton
Subdivision	Boyle Street
City	Edmonton
County	ALBERTA
Province	AB
Postal Code	T5H 0H9

### Amenities

Amenities	No Smoking Home, Vinyl Windows
Parking	Parkade

### Interior

Interior Features	ensuite bathroom
Appliances	Dishwasher-Built-In, Dryer, Refrigerator, Stove-Electric, Washer
Heating	Baseboard, Natural Gas
# of Stories	4
Stories	1
Has Basement	Yes
Basement	None, No Basement

### Exterior

Exterior	Wood, Vinyl
Exterior Features	Playground Nearby, Public Transportation, Schools, Shopping Nearby
Roof	Asphalt Shingles
Construction	Wood, Vinyl
Foundation	Concrete Perimeter

### Additional Information

Date Listed	June 20th, 2025
Days on Market	28
Zoning	Zone 13
Condo Fee	\$647

DATA IS DEEMED RELIABLE BUT IS NOT GUARANTEED ACCURATE BY THE REALTORS® ASSOCIATION OF EDMONTON. COPYRIGHT 2025 BY THE REALTORS® ASSOCIATION OF EDMONTON. ALL RIGHTS RESERVED. Trademarks are owned or controlled by the Canadian Real Estate Association (CREA) and identify real estate professionals who are members of CREA (REALTOR®, REALTORS®) and/or the quality of services they provide (MLS®, Multiple Listing Service®)

Listing information last updated on July 18th, 2025 at 4:17pm MDT