

\$834,900 - 11 Edgewater Terr, St. Albert

MLS® #E4446272

\$834,900

5 Bedroom, 3.50 Bathroom, 2,394 sqft

Single Family on 0.00 Acres

Erin Ridge North, St. Albert, AB

Visit the Listing Brokerage (and/or listing REALTOR®) website to obtain additional information. WALKOUT BACKING ONTO POND | SOUTH-FACING | 5 BED + DEN + BONUS Walkout estate home built by Parkwood homes in Erin Ridge North backing a peaceful pond and green space with incredible south-facing views. This 2,394 sq ft two-storey with finished walkout basement features exotic hardwood, front sitting room, main floor den, open living/dining with gas fireplace, quartz kitchen counters, large pantry, and stainless-steel fridge (2023). Sunny upper deck with gas BBQ hookup and hot/cold taps. Upstairs: bonus room, laundry with sink, 2 bedrooms, and bright master bedroom with pond views, walk-in, and 5-piece ensuite. Walkout basement: 2 beds, full bath, rec room, and patio to landscaped yard with private gate. Heated oversized garage, A/C, Hunter Douglas blinds, new HWT (2024), and approx. 3,500 sq ft of total living space. Steps to trails, parks, and schools.

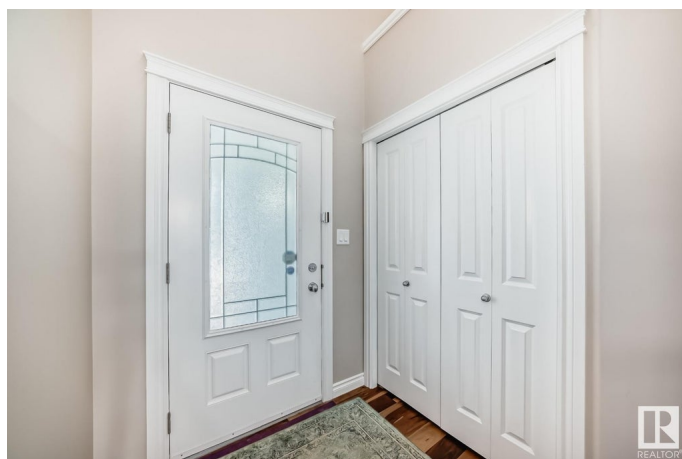
Built in 2013

Essential Information

MLS® # E4446272

Price \$834,900

Bedrooms 5



| | |
|----------------|------------------------|
| Bathrooms | 3.50 |
| Full Baths | 3 |
| Half Baths | 1 |
| Square Footage | 2,394 |
| Acres | 0.00 |
| Year Built | 2013 |
| Type | Single Family |
| Sub-Type | Detached Single Family |
| Style | 2 Storey |
| Status | Active |

Community Information

| | |
|-------------|-------------------|
| Address | 11 Edgewater Terr |
| Area | St. Albert |
| Subdivision | Erin Ridge North |
| City | St. Albert |
| County | ALBERTA |
| Province | AB |
| Postal Code | T8N 4G5 |

Amenities

| | |
|---------------|--|
| Amenities | Air Conditioner, Carbon Monoxide Detectors, Ceiling 10 ft., Deck, Detectors Smoke, Front Porch, No Smoking Home, Patio, Walkout Basement |
| Parking | Double Garage Attached |
| Is Waterfront | Yes |

Interior

| | |
|-------------------|---|
| Interior Features | ensuite bathroom |
| Appliances | Dishwasher-Built-In, Dryer, Refrigerator, Stove-Electric, Washer, See Remarks |
| Heating | Forced Air-2, Natural Gas |
| Fireplace | Yes |
| Fireplaces | Heatilator/Fan, Remote Control, Tile Surround |
| Stories | 3 |
| Has Basement | Yes |
| Basement | Full, Finished |

Exterior

| | |
|-------------------|---|
| Exterior | Wood, Hardie Board Siding |
| Exterior Features | Backs Onto Lake, Backs Onto Park/Trees, Fenced, Landscaped, Playground Nearby, Public Transportation, Schools, Shopping Nearby, View Lake |
| Roof | Asphalt Shingles |
| Construction | Wood, Hardie Board Siding |
| Foundation | Concrete Perimeter |

Additional Information

| | |
|----------------|----------------|
| Date Listed | July 4th, 2025 |
| Days on Market | 9 |
| Zoning | Zone 24 |

DATA IS DEEMED RELIABLE BUT IS NOT GUARANTEED ACCURATE BY THE REALTORS® ASSOCIATION OF EDMONTON. COPYRIGHT 2025 BY THE REALTORS® ASSOCIATION OF EDMONTON. ALL RIGHTS RESERVED. Trademarks are owned or controlled by the Canadian Real Estate Association (CREA) and identify real estate professionals who are members of CREA (REALTOR®, REALTORS®) and/or the quality of services they provide (MLS®, Multiple Listing Service®)

Listing information last updated on July 13th, 2025 at 5:17pm MDT